

INSTRUCTION SHEET



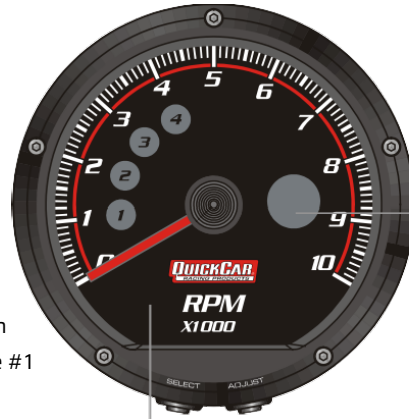
REDLINE STEPPER TACHOMETER

Refer to Spec Sheet for Data Recording Instruction

IMPORTANT: If you are running a V8 engine, DO NOT touch the buttons on the bottom of the tachometer. Only use the remote red button for operating the tach.

STOP/START RECORDING PROCEDURE

1. With the car running, before going on the track, push the red button to start recording. The #1 will flash.
2. Before shutting the car off after a session, push the red button to stop recording. The #4 will flash.



Tachometer
Display Range: 0-10,000 RPM

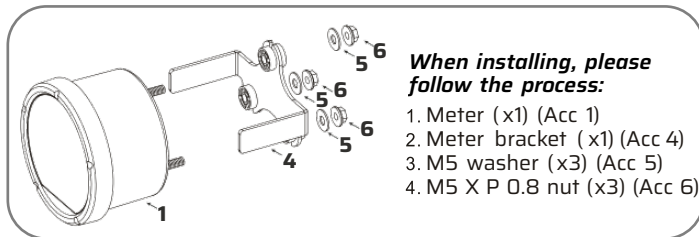
Shift Light
Setting Range: 0-10,000 RPM
Setting Unit: 500 RPM

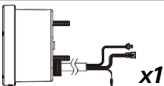





TO SEE RPM RECALLS

Turn power on to the tach, generally accomplished by turning the ignition switch on without starting the car. Hold the red button for 3 seconds. The #1 and red light will light up; this is your highest rpm attained. Press the red button, the #2 and blue light will appear, this is a low rpm. Continue pressing the button to see the 4 high and 4 low recalls. (red=high, blue=low).

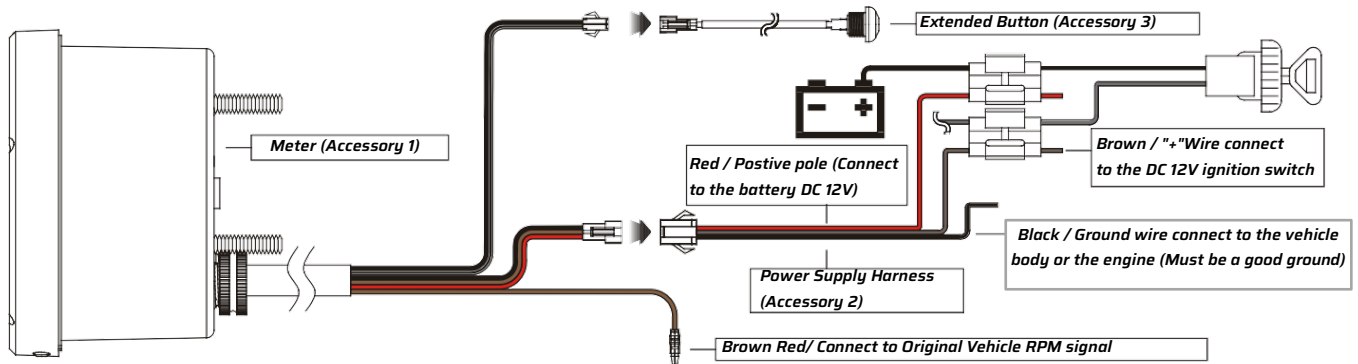
TO ERASE READINGS

While looking at the recalls, HOLD the red button for 3 seconds. Numbers 1-4 will flash indicating the recalls have been erased.



| | | |
|---|---|--|
| 1 Meter  x1 | 2 Power Supply Harness  x1 | 3 Extended Button  x1 |
| 4 Meter Bracket  x1 | 5 M5 Washer  x3 | 6 M5 X P 0.8 Nut  x3 |

WIRING INSTALLATION INSTRUCTIONS



REV.10-24

⚠ WARNING: This product can expose you to chemicals including lead, which is/are known to the state of California to cause cancer, birth defects or other reproductive harm. For more information, go to: www.P65Warnings.ca.gov

