

# INSTRUCTION SHEET



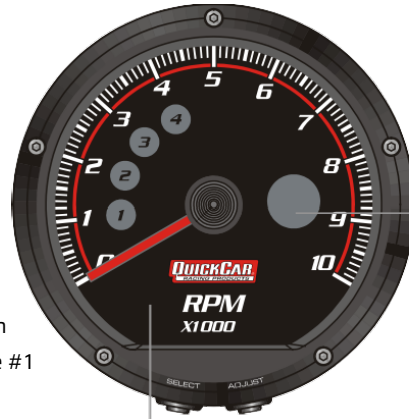
## REDLINE STEPPER TACHOMETER

Refer to Spec Sheet for Data Recording Instruction

**IMPORTANT: If you are running a V8 engine, DO NOT touch the buttons on the bottom of the tachometer. Only use the remote red button for operating the tach.**

### STOP/START RECORDING PROCEDURE

1. With the car running, before going on the track, push the red button to start recording. The #1 will flash.
2. Before shutting the car off after a session, push the red button to stop recording. The #4 will flash.



**Tachometer**  
Display Range: 0-10,000 RPM

**Shift Light**  
Setting Range: 0-10,000 RPM  
Setting Unit: 500 RPM

### TO SEE RPM RECALLS

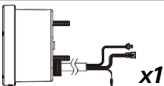

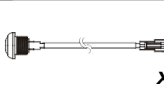



Turn power on to the tach, generally accomplished by turning the ignition switch on without starting the car. Hold the red button for 3 seconds. The #1 and red light will light up; this is your highest rpm attained. Press the red button, the #2 and blue light will appear, this is a low rpm. Continue pressing the button to see the 4 high and 4 low recalls. (red=high, blue=low).

### TO ERASE READINGS

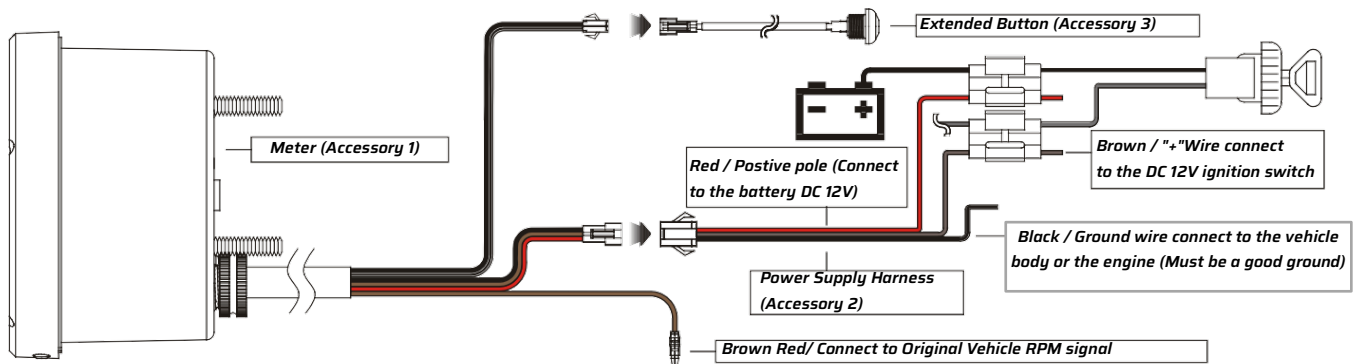
While looking at the recalls, HOLD the red button for 3 seconds. Numbers 1-4 will flash indicating the recalls have been erased.

**When installing, please follow the process:**

1. Meter (x1) (Acc 1)
2. Meter bracket (x1) (Acc 4)
3. M5 washer (x3) (Acc 5)
4. M5 X P 0.8 nut (x3) (Acc 6)

<b>1 Meter</b>  x1	<b>2 Power Supply Harness</b>  x1	<b>3 Extended Button</b>  x1
<b>4 Meter Bracket</b>  x1	<b>5 M5 Washer</b>  x3	<b>6 M5 X P 0.8 Nut</b>  x3

### WIRING INSTALLATION INSTRUCTIONS



REV.10-24

**⚠ WARNING:** This product can expose you to chemicals including lead, which is/are known to the state of California to cause cancer, birth defects or other reproductive harm. For more information, go to: [www.P65Warnings.ca.gov](http://www.P65Warnings.ca.gov)

