



DIGITAL TIRE PRESSURE GAUGES

52-53006 0-60 PSI

52-53036 0-100 PSI

QUICK START INSTRUCTIONS

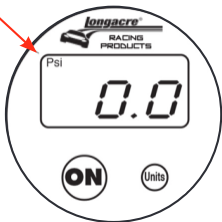
- Push ON to turn gauge on.
- Gauge shuts off automatically after 3 minutes of inactivity. Turn back on if needed.
- Gauge auto-zeroes at turn on.
- If zeroing is needed, push ON and hold for 3 seconds.

Reads to 0.2 PSI

WARNING

DO NOT DROP THE UNIT. KEEP IT CLEAN AND DRY. DO NOT EXPOSE TO STRONG ELECTROMAGNETIC FIELDS (caster/camber gauge magnets). DO NOT EXCEED RATED PRESSURE. When the Low Battery indicator appears in the upper right of the display (see below), replace with 2 pieces of LR44 button cell batteries. Access is on the back of the gauge.

UNITS CHOICE:
PSI here



Bar here



UNITS
Button

Low Battery
indicator



CONVERT TO METRIC, BAR, OR OTHER.

- Turn gauge on. When 0.0 appears push **AND HOLD** the UNITS button on the right side.
- After 3 seconds, the units indication will start to flash. This is along the top of the display. PSI will be on the upper left.
- Release the UNITS button and then push again to change. Options are PSI, BAR, Kgm/cm2, and kPa.
- Once you have reached your selection, stop pushing the button. The gauge will return to normal function in 5 seconds.